

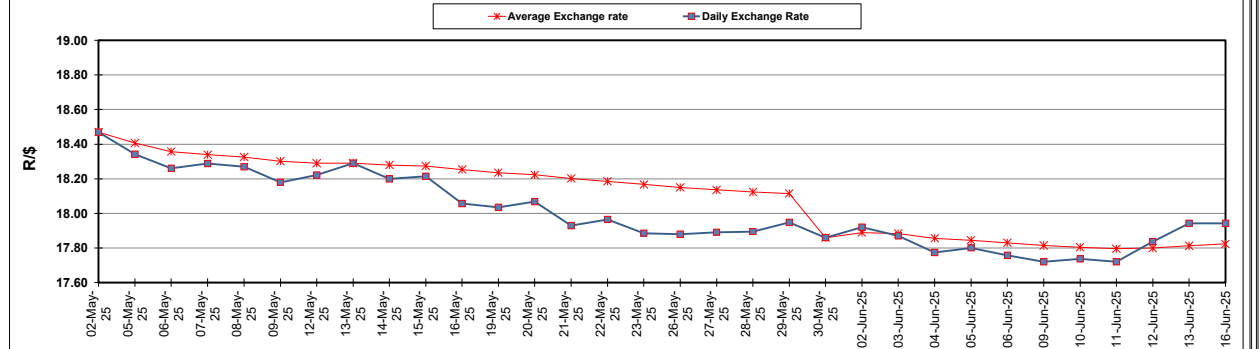
| South African Cents per Litre (SA c/l) | PETROL 95 ULP | PETROL 93 ULP & LRP | DIESEL 0.05% | DIESEL 0.005% | ILL. PAR. |
|--|---------------|---------------------|--------------|---------------|-----------|
| GAUTENG PUMP PRICE AS FROM 04/06/2025 | 2,135.000 | 2,124.000 | - | - | - |
| WHOLESALE PRICE AS FROM 04/06/2025 | - | - | 1,853.350 | 1,856.750 | 1,248.618 |
| SINGLE NATIONAL MAXIMUM RETAIL PRICE AS FROM 04/06/2025 | - | - | - | - | 1,580.000 |
| BASIC FUEL PRICE - 16/06/2025 | 1,068.769 | 1,052.651 | 1,123.733 | 1,128.556 | 1,111.821 |
| PRESS RELEASE CONTRIBUTION TO BFP 04/06/2025 - 16/06/2025 | 980.870 | 969.870 | 989.630 | 993.030 | 984.128 |
| UNIT OVER/(UNDER) RECOVERY - 16/06/2025 | (87.899) | (82.781) | (134.103) | (135.526) | (127.693) |
| AVERAGE BASIC FUEL PRICE 30/05/2025 - 16/06/2025 | 994.975 | 980.681 | 1,012.438 | 1,017.577 | 998.992 |
| AVERAGE UNIT OVER/(UNDER) RECOVERY 30/05/2025 - 16/06/2025 | (8.855) | (5.561) | (9.808) | (11.547) | (0.864) |

ANALYSIS MOVEMENT OF AVERAGE OVER/(UNDER) RECOVERY

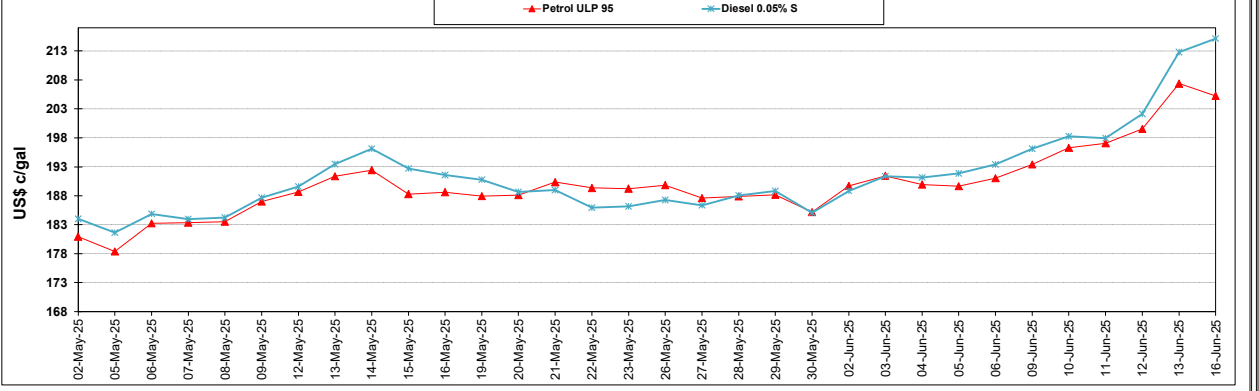
| | PETROL 95 | PETROL 93 | DIESEL 0.05% | DIESEL 0.005% | ILL. PAR. |
|--|-----------|-----------|--------------|---------------|-----------|
| - MOVEMENT IN INTERNATIONAL PRODUCT PRICES | (25.111) | (21.583) | (26.349) | (28.172) | (17.186) |
| - MOVEMENT IN EXCHANGE RATE | 16.256 | 16.022 | 16.541 | 16.625 | 16.322 |
| AVERAGE UNIT OVER/(UNDER) RECOVERY 30/05/2025 - 16/06/2025 | (8.855) | (5.561) | (9.808) | (11.547) | (0.864) |

R/\$ EXCHANGE RATE - (R/\$17.9420 - 16/06/2025)

EXCHANGE RATE USED IN BASIC FUEL PRICE



INTERNATIONAL PRODUCT PRICES OF BASKET USED IN BASIC FUEL PRICE



BASIC FUEL PRICE IN SA CENTS PER LITRE

